



REGIONAL SPECIALISED METEOROLOGICAL CENTRE-TROPICAL CYCLONES, NEW DELHI
TROPICAL WEATHER OUTLOOK

DEMS-RSMC TROPICALCYCLONES NEW DELHI DATED 14.09.2022

TROPICAL WEATHER OUTLOOK FOR NORTH INDIAN OCEAN (THE BAY OF BENGAL AND ARABIAN SEA) VALID FOR NEXT 120 HOURS ISSUED AT 0600 UTC OF 14.09.2022 BASED ON 0300 UTC OF 14.09.2022.

BAY OF BENGAL:

THE WELL MARKED LOW PRESSURE AREA OVER NORTHWEST MADHYA PRADESH & NEIGHBOURHOOD PERSISTS. IT IS LIKELY TO MOVE SLOWLY NORTH-NORTHWESTWARDS DURING NEXT 24 HOURS AND GRADUALLY RECURVE NORTHEASTWARDS ACROSS SOUTH UTTAR PRADESH. IT IS VERY LIKELY TO INTERACT WITH A TROUGH IN MID-LATITUDE WESTERLIES DURING 15TH TO 17TH SEPTEMBER, 2022. THERE IS A POSSIBILITY OF INTENSIFICATION OF WELL MARKED LOW PRESSURE AREA INTO A DEPRESSION OVER SOUTHWEST UTTAR PRADESH AROUND 16TH SEPTEMBER, 2022.

SCATTERED TO BROKEN LOW AND MEDIUM CLOUDS WITH EMBEDDED INTENSE TO VERY INTENSE CONVECTION OVER NORTH & CENTRAL BAY OF BENGAL, NORTH ANDAMAN SEA AND GULF OF MARTABAN. SCATTERED LOW AND MEDIUM CLOUDS WITH EMBEDDED MODERATE TO INTENSE CONVECTION OVER SOUTH ANDAMAN SEA AND WEAK TO MODERATE CONVECTION OVER SOUTH BAY OF BENGAL.

PROBABILITY OF CYCLOGENESIS (FORMATION OF DEPRESSION) DURING NEXT 120 HRS:

24 HOURS	24-48 HOURS	48-72 HOURS	72-96 HOURS	96-120 HOURS
NIL	LOW	NIL	NIL	NIL

ARABIAN SEA:

SCATTERED TO BROKEN LOW AND MEDIUM CLOUDS WITH EMBEDDED INTENSE TO VERY INTENSE CONVECTION OVER NORTHEAST ARABIAN SEA OFF GUJARAT COAST. SCATTERED LOW AND MEDIUM CLOUDS WITH EMBEDDED MODERATE TO INTENSE CONVECTION OVER GULF OF CAMBAY, EASTCENTRAL ARABIAN SEA AND WEAK TO MODERATE CONVECTION OVER WESTCENTRAL & SOUTHWEST ARABIAN SEA.

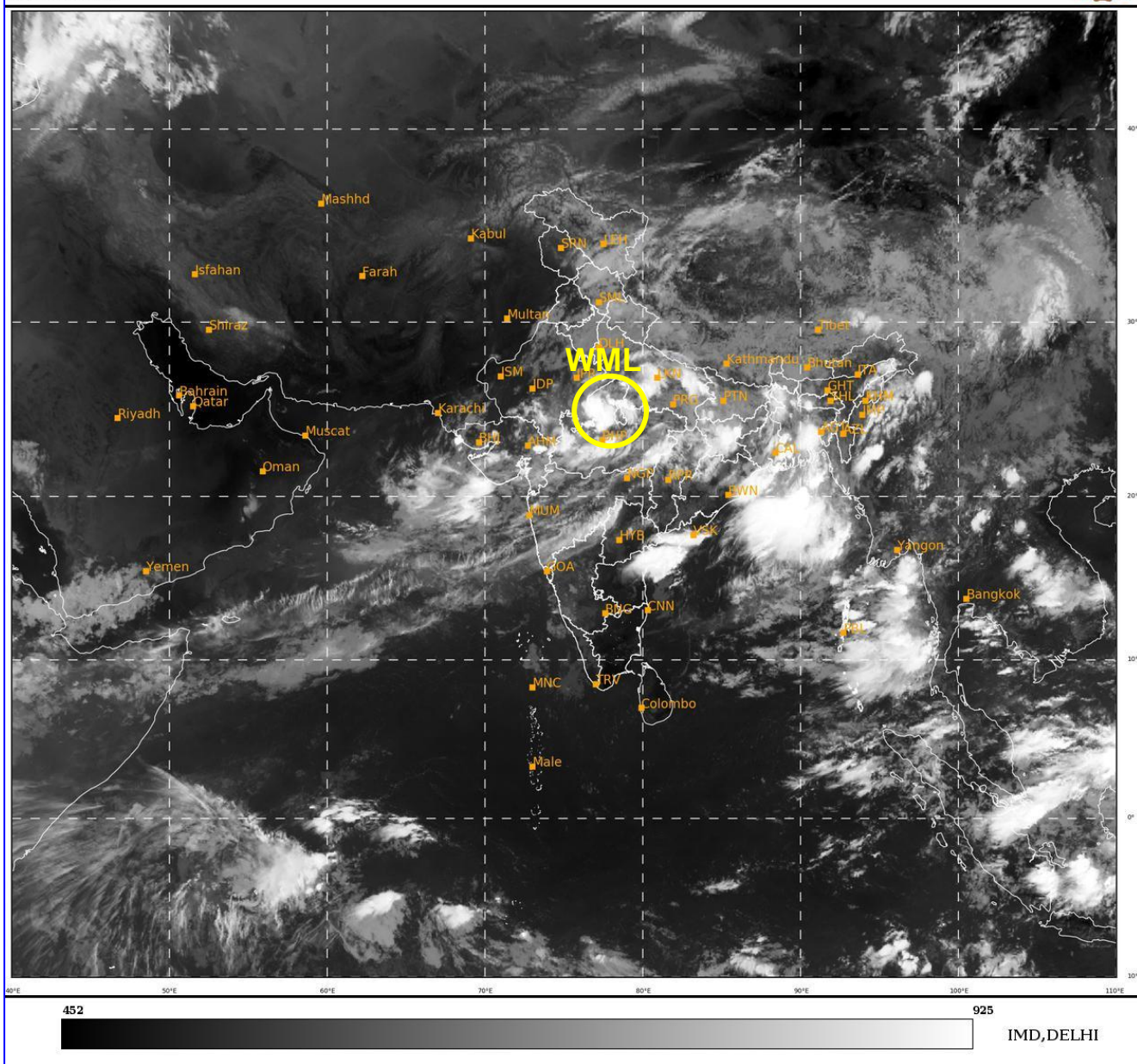
PROBABILITY OF CYCLOGENESIS (FORMATION OF DEPRESSION) DURING NEXT 120 HRS:

24 HOURS	24-48 HOURS	48-72 HOURS	72-96 HOURS	96-120 HOURS
NIL	NIL	NIL	NIL	NIL

Remarks: Nil

SAT : INSAT-3D IMG
 IMG_TIR1 10.8 um
 L1C Mercator

14-09-2022/(0300 to 0326) GMT
 14-09-2022/(0830 to 0856) IST



WML: WELL MARKED LOW PRESSURE AREA

Cloud distribution: (a) Isolated: <25%, Scattered: 25-50%, Broken: 51-75%, Solid: >75%, Convection Intensity: (a) Weak: Cloud Top Temperature (CTT) >-25°C, (b) Moderate: CTT: - 25°C to -40°C, (c) Intense: CTT: - 41°C to -70°C and (d) Very Intense: : Less than -70°C
 PROBABILITY OF CYCLOGENESIS (FORMATION OF DEPRESSION): NIL: 0%, LOW: 1-33%, MODERATE: 34-66% AND HIGH: 67-100%
 This is a guidance Bulletin for WMO/ESCAP Panel Member countries. Visit respective National websites for Country specific Bulletins